



Department for Levelling Up,
Housing & Communities

Towns Conference

20 June 2023

Manchester, UK





Programme Update from DLUHC

Jessica Blakely, Director
Levelling Up: Major Programmes



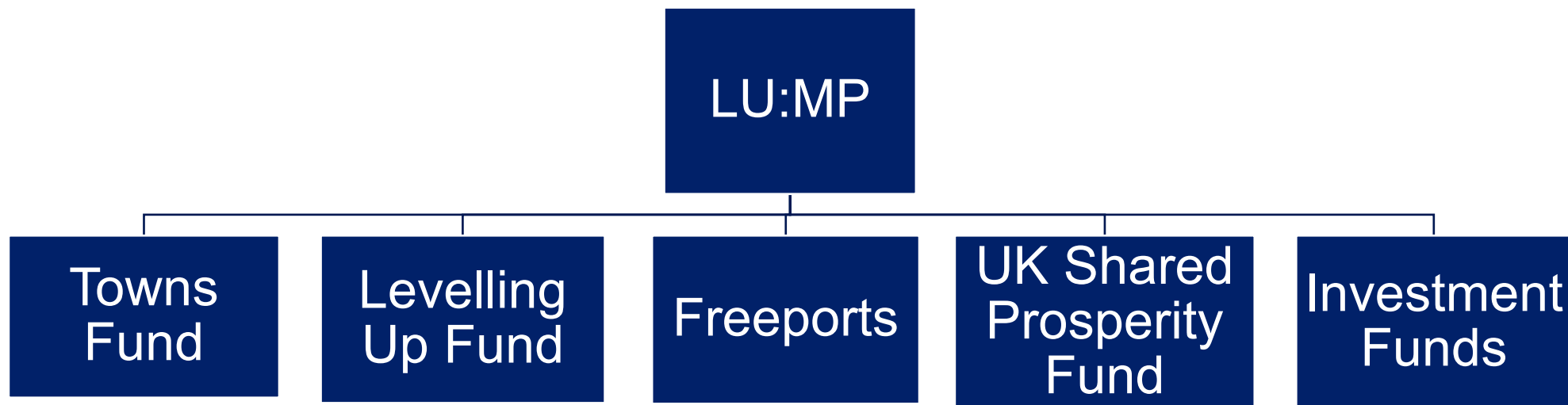


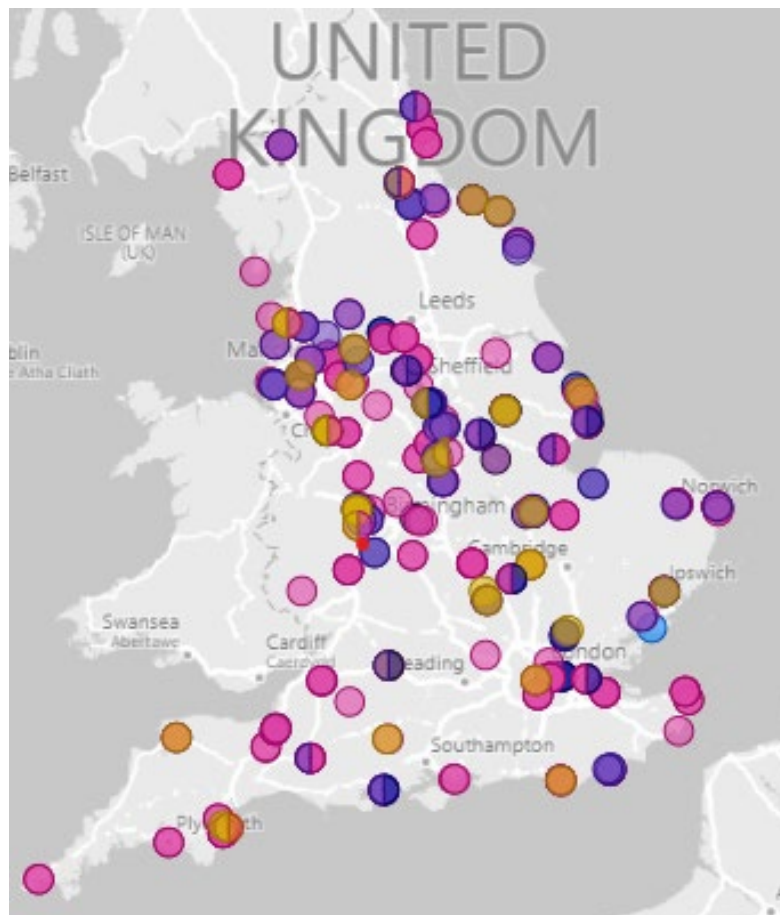
Department for Levelling Up,
Housing & Communities

Towns Fund

Jessica Blakely

Director, Levelling Up: Major Programmes





Map of Town Deals & FHSF

Town Deals

“Drive the economic regeneration of towns to deliver long term economic and productivity growth”

- £2.2bn shared between 101 selected towns
- Programme ends March 2026

Future High Streets Fund

“Renew and reshape town centres and high streets in a way that drives growth, improves experience and ensures future sustainability”

- £830m shared between 72 high streets selected via competition
- Programme ends March 2024*



Key achievements

What we've achieved together

Town Deals

- 101 Town Deal Boards up and running
- 101 Town Investment Plans assessed and funding awarded
- 684 Summary Documents received, including 6 FBCs
- Capacity funding paid directly to all LAs
- 5% CDEL upfront payments paid to all LAs
- Just under 2 years of support from TFDP

FHSF

- 101 full business cases received and assessed
- 72 high street business cases approved
- Capacity funding paid directly to LAs to develop the business cases



Key Challenges

- Rising costs
- Stakeholder Management
- Procurement
- Supply Chain issues and delays
- Governance
- Capacity

How can we help?

Project Adjustment Process

- Making it easier to make changes to projects, helping you to respond to external pressures and change

Capacity support

- Supporting you directly through our Area Teams
- Later this year, access to technical experts through Delivery Associates

Listening

- Tell us what you need!



Support
Delivery

Monitoring
and
Evaluation



Lessons
learned

Celebrate
successes





Strategic Regeneration and the Towns Fund

Chair: Joanna Rowelle

1. Blackpool (Nick Gerrard)
2. Hartlepool (Bev Bearne)
3. Sandwell (Rina Rahim)
4. Swindon FHSF (Lynsey Turner, Craig Walker)





Department for Levelling Up,
Housing & Communities

Blackpool Council

Nick Gerrard



Blackpool

Blackpool makes it work



HM Government

Blackpool's Town Deal & £2bn+ Growth and Prosperity Programme

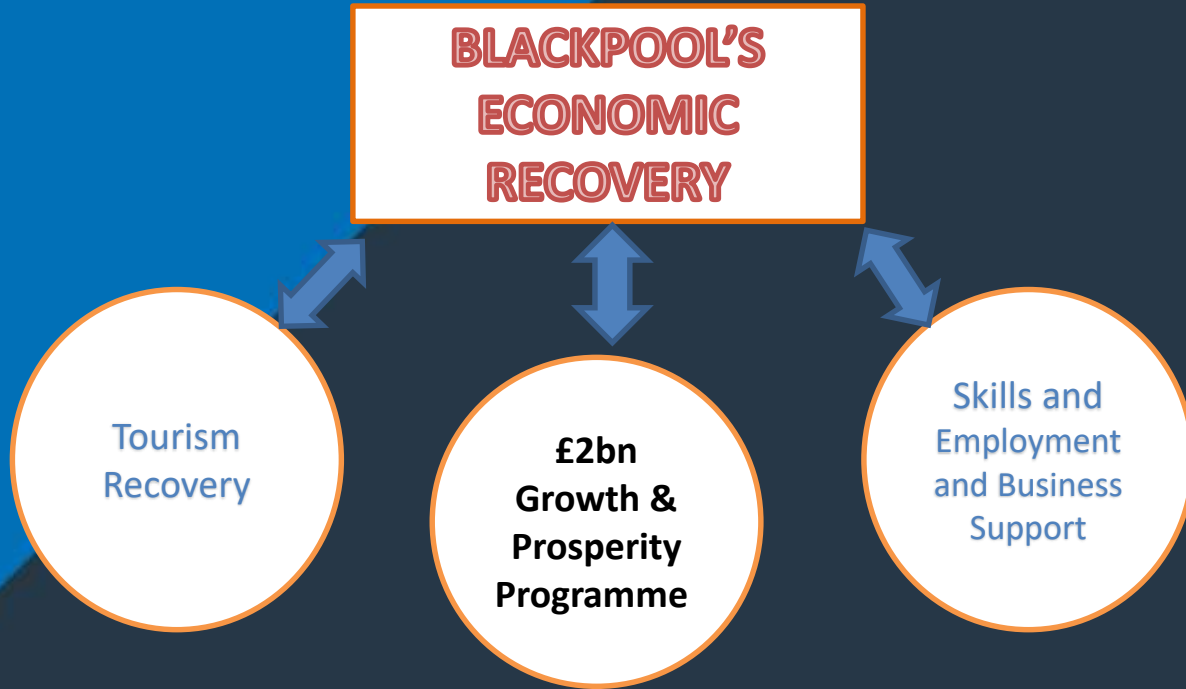
Nick Gerrard, Growth & Prosperity Programme Director
Blackpool Council

BLACKPOOL'S ECONOMIC RECOVERY

Tourism
Recovery

£2bn
Growth &
Prosperity
Programme

Skills and
Employment
and Business
Support



2bn+
**Growth &
Prosperity
Programme**

STRATEGIC OBJECTIVES

- ***Town Centre regeneration
(Talbot Gateway)***
- ***Extending the Tourism Season
(Blackpool Central)***
- ***Jobs in Growth Sectors
(Enterprise Zones)***

Major recent investments (£830m)

Over £830m of investment in the past decade

- Phase 1 of Talbot Gateway - £80m
- Promenade/ sea defences & 17km new tramway - £285m
- Blackpool Tower and Winter Gardens - £50m
- Houndshill Shopping Centre - £150m
- Public spaces - £12m
- Electrification of Preston - Blackpool line - £225m
- The Boulevard 4 * hotel - £12m
- Hampton by Hilton 3* hotel - £12m
- Premier Inn 3* hotel - £7.1m

Investments recently completed/underway (over £1bn)

- **Phase 2 Talbot Gateway (tram/transport interchange) - £35m**
- **Phase 3 Talbot Gateway – DWP Civil Service Hub - £99m**
- **Winter Gardens Conference and Exhibition Centre - £25m**
- **Blackpool Airport Enterprise Zone - c £300m**
- **Blackpool Central - £300m**
- **Blackpool Museum - £13m**
- **Quality Corridors - £7m**
- **5 / 4 / 3 star hotels – c £50m**
- **Houndshell Phase 2 extension - £20m**
- **Abingdon Street Market refurbishment - £4.0m**
- **Abingdon Street Post Office - £26m**
- **Blackpool Business Loans Fund - £200m**

Blackpool's Town Deal Programme - £40.5m of £180m total

- **The Platform (Youth Hub) - £500k**
- **The Edge - £4.5m of £7m total**
- **Blackpool Airport Enterprise Zone - £7.5m of £23.9m total**
- **Blackpool Illuminations - £4.5m of £13.2m total**
- **Blackpool Central courts relocation - £7m* of £47m total**
- **Revoe Community Sports Village - £6.5m of £23.5m total**
- **Multiversity - £9m of £65m total**
- *** plus £1m accelerated funding**

The Platform (Youth Hub)



The Platform (Youth Hub)



The Edge



The Edge



VIEW FROM CAUNCE STREET

Blackpool Airport Enterprise Zone Infrastructure



Blackpool Airport Enterprise Zone Infrastructure



Blackpool Illuminations Rejuvenation



Blackpool Illuminations Rejuvenation



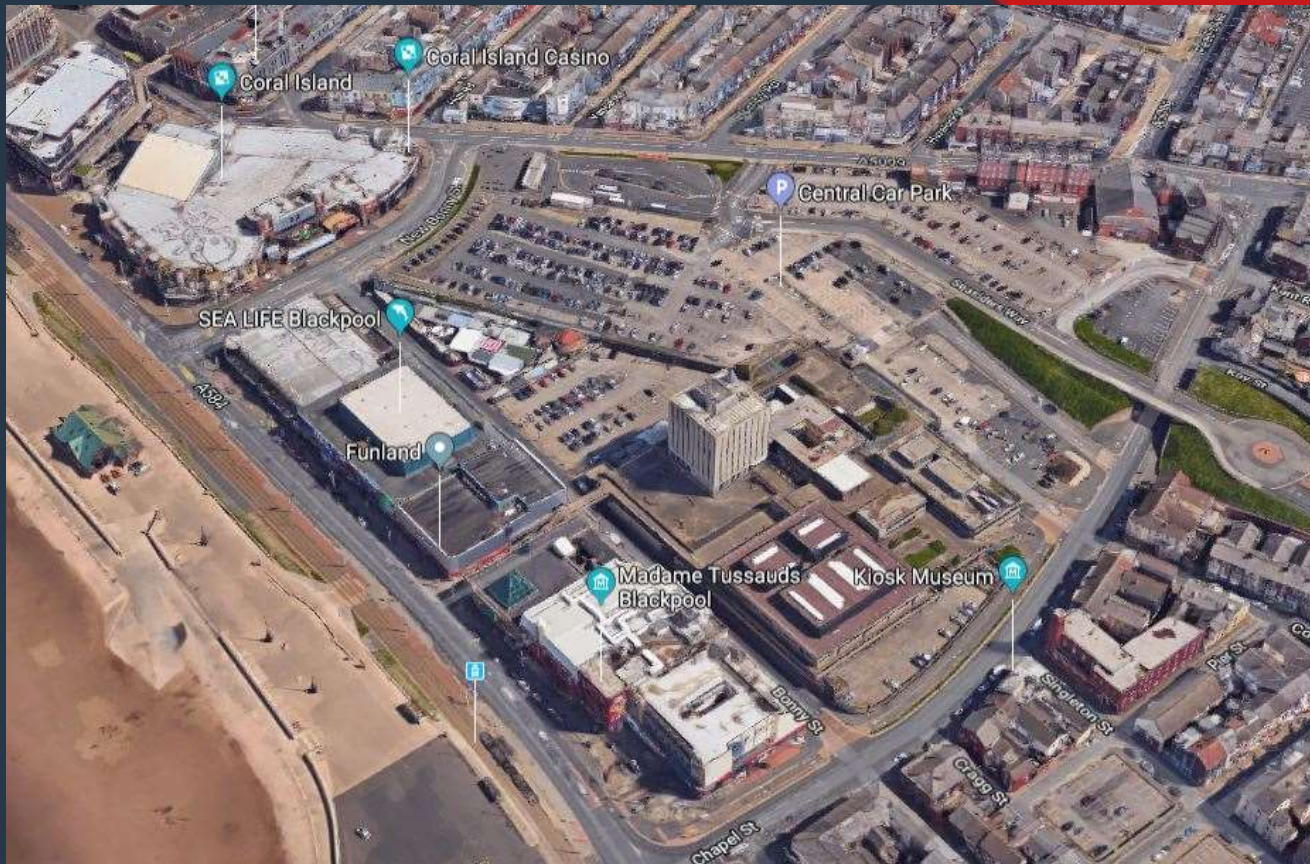
Blackpool Illuminations Rejuvenation



Blackpool Central Courts Relocation



Blackpool Central Courts Relocation



Blackpool Central Courts Relocation



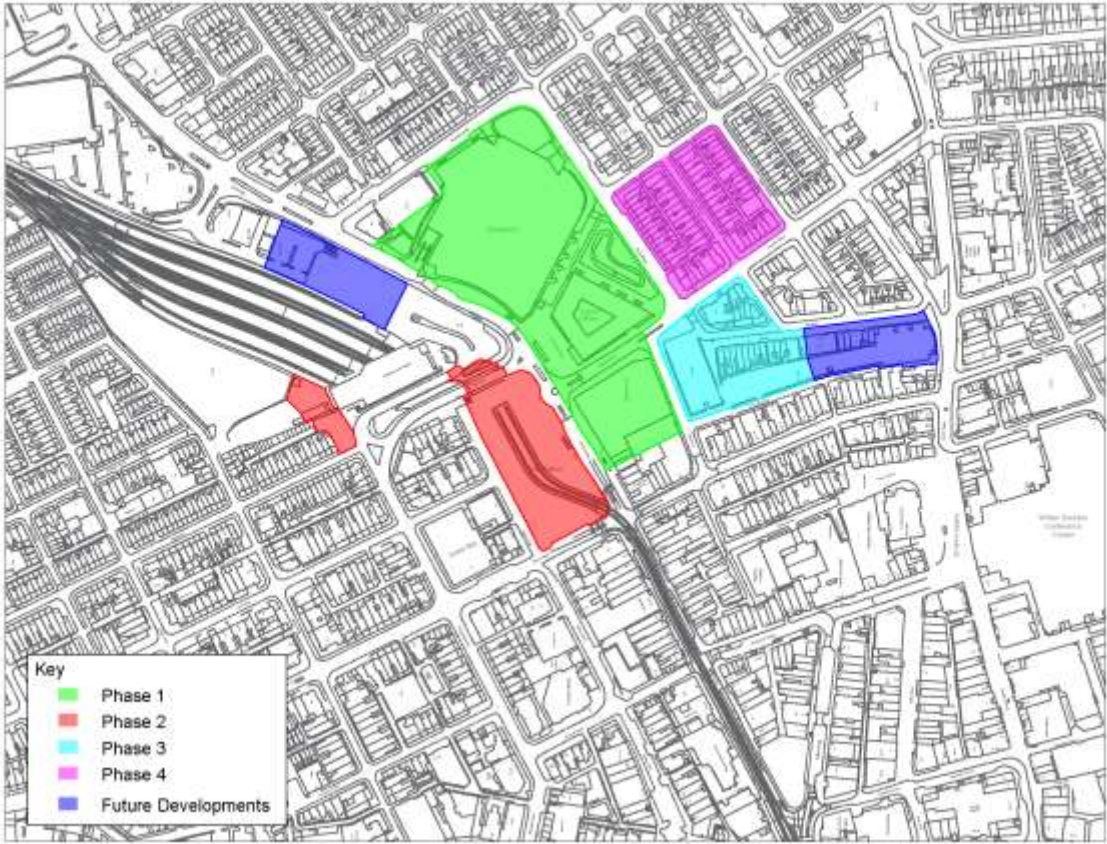
Revoe Community Sports Village



Revoe Community Sports Village



Multiversity Site Assembly



Multiversity Site Assembly



Multiversity Site Assembly



Blackpool's Town Deal – some key comments

- **Have a Vision and Plan**
- **Be Strategic**
- **Governance Arrangements**
 - **Town Deal Board**
 - **Town Deal Investment Panel**
 - **Town Deal Project Board**
- **Challenges**
 - **Cost price inflation**
 - **Interest rates**
 - **Tender response**
- **Never Give Up !**

Blackpool

Blackpool makes it work



www.businessinblackpool.com

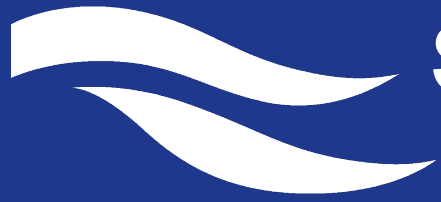


Department for Levelling Up,
Housing & Communities

Hartlepool Borough Council

Bev Bearne





Strategic Regeneration and the Towns Fund in Hartlepool



Bev Bearne – Assistant Director Development & Growth



Quick Geography Lesson



Hartlepool in Context...

92,300
residents in
40,900
households
(2021 Census)



32,300
Jobs (2021)

13,899
residents on
universal credit
(October 2022)



2,200
enterprises
(2022)



**Covers
36 square
miles**

18,300

residents aged 65+
(2021 census)



11 Trains

Average daily
number of trains
to London



**£1.38
Billion**

Size of Hartlepool
Economy (2020)



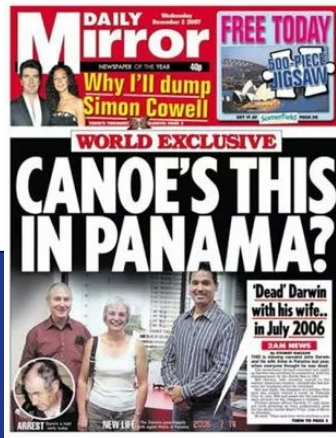
**HARTLEPOOL
BOROUGH COUNCIL**

Alternative facts!



Allegedly tried and executed a monkey during Napoleonic War

The only First World War Battlefield in the UK (bombardment by Imperial German Army in Dec 1914 killing 117 citizens)

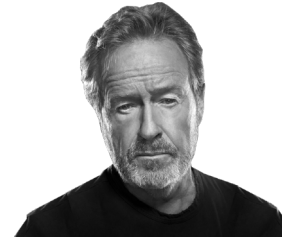


Seaton Carew - home to John Darwin (aka "Canoe Man")

Famous Faces



Jeff Stelling



Sir Ridley Scott (Educated at Northern School of Art)



Brian Clough (Lived here for a while)



HARTLEPOOL
BOROUGH COUNCIL

Our Strategic Regeneration Journey So Far

2020

- 'Town Investment Plan' first published

2021

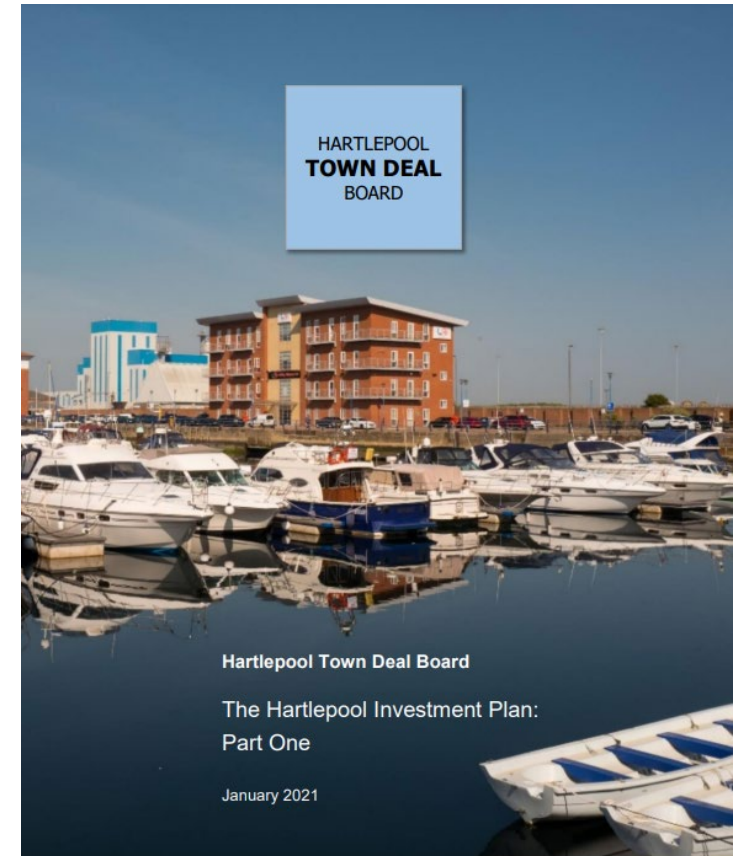
- Our first 'Town Centre Masterplan' adopted
- Climate Pledge approved to embed Net Zero

2022

- Adopted our 'Inclusive Growth Strategy'
- Five Town Deal projects worth £25m in delivery

2023

- £16.5m of Levelling Up Round 2 funding secured
- Hartlepool Development Corporation established



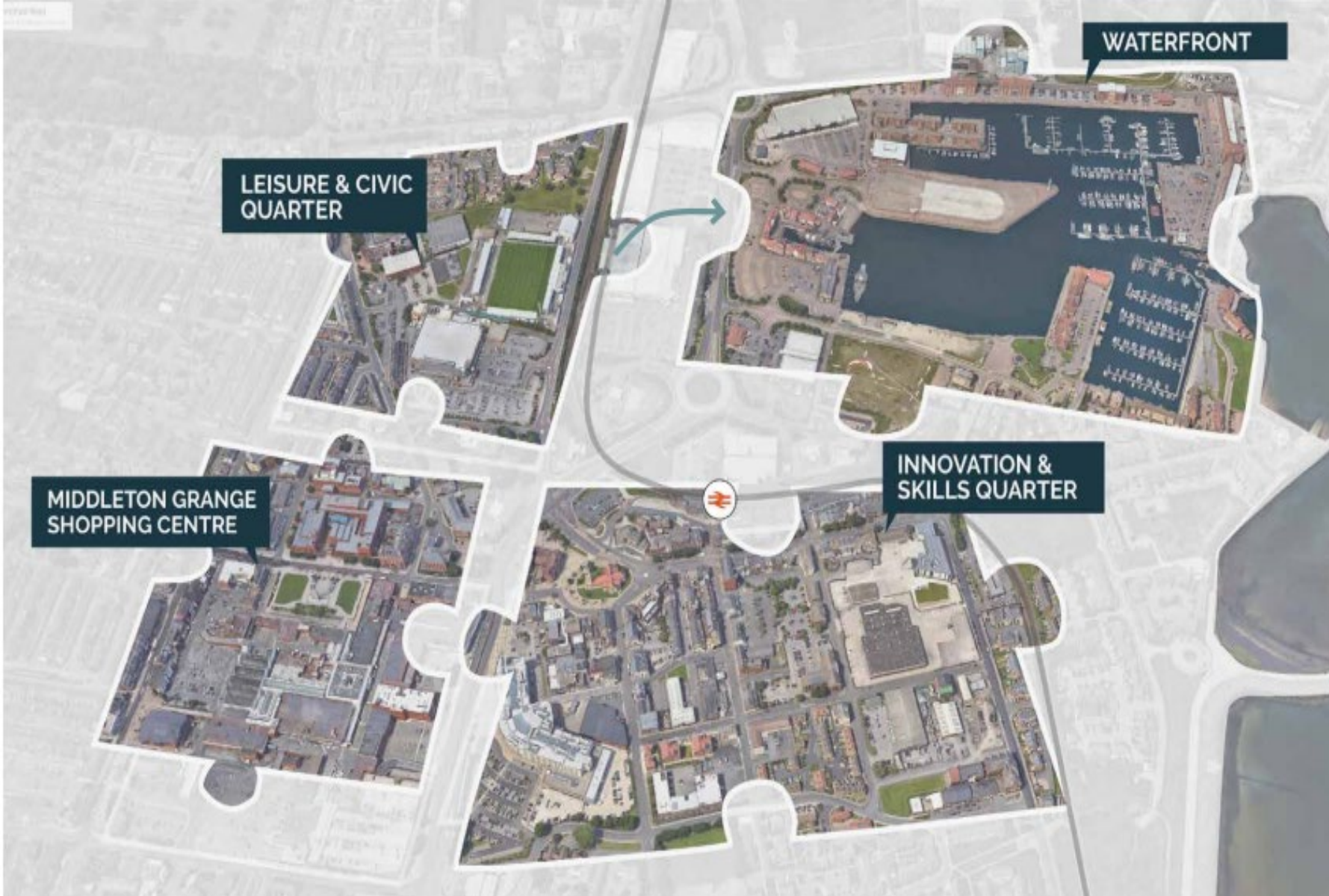
 **HARTLEPOOL**
BOROUGH COUNCIL

 **genecon**
making sense of place economics

 **ARCADIS**



HARTLEPOOL
BOROUGH COUNCIL



TOWN CENTRE MASTERPLAN

- Creating a 'new Heart for Hartlepool'
- Providing a clear path for future growth of Hartlepool Town Centre over the next 20 years
- Connecting key locations of the town centre to our fabulous waterfront and marina



21 Capital Projects in Delivery



£115m

Of funding secured
and being invested



650

new jobs (FTE)



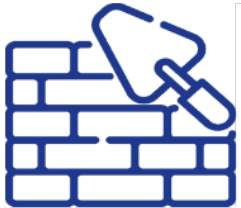
Over £300m

of additional
economic benefit



300,000+

additional visitors



supporting

1500

construction jobs



3500

square meters of new
commercial floorspace

All designed to....

Create a new Heart for
Hartlepool

Provide different offers and
mix of economic activity

Deliver a more vibrant and
functional town

Demonstrate viability

Change peoples perception
of Hartlepool for good



**HARTLEPOOL
BOROUGH COUNCIL**

Waterfront Programme – Creating a Tourist Destination



- **£36m – prudential borrowing and capital grant from TVCA**
 - **Highlight Leisure Centre - contract award Summer '23**
 - **Wingfield Castle Restoration – emergency repairs underway**
 - **Museum of Hartlepool refurbishment – out to tender for design competition to RIBA 3**
 - **Dam Board repair – dive surveys and delivery plan development**
 - **National Museum of the Royal Navy Hartlepool – business case development for £8.5m expansion and additional exhibition space**
- **Delivery timeframe 2023 – 2026**
- **Projects range from RIBA 1 to RIBA 4 with huge interdependencies**

TOWNS FUND – HELPING US CREATE A NEW HEART FOR HARTLEPOOL

Reimagining Middleton Grange



What

- £13.8m redevelopment of North East wing of shopping centre
- Bringing the former Grade II listed Binns Building back into use

Wesley Chapel



What

- £4.1m redevelopment of 1873 Grade II listed building
- 36 bedroom boutique hotel, hospitality venue and commercial units

Waterfront Connectivity



Two Skills Academies



What

- £2.25m Civil Engineering Skills Academy
- £2.25m Health and Social Care Academy
- Expanding access to skills and qualifications

Where

- Brenda Road Hartlepool, Hartlepool FE College and North Tees Hospital



When

- March 2023 – April 2024

Who

- HBC, NHS, Seymours, HCFE

Growing Screen Industries Sector



Levelling up Hartlepool

HARTLEPOOL BOROUGH COUNCIL
LEVELLING UP

- 131 new jobs created
- 10 dilapidated buildings brought back into use
- 2,600 additional people visiting the Production Village per annum
- 2,750 square metres of new floor space for the screen industries and creative sector

The infographic features a background image of a harbor at sunset with many masts visible. The statistics are presented in colored horizontal bars: pink for jobs, purple for buildings, teal for visitors, and yellow for floor space.

Challenges & Successes

- Capacity – people, skills, knowledge & capabilities at all levels
- Balancing multiple stakeholders & managing expectations
- Inflation and supply chain issues
- Subsidy control
- Great people with enthusiasm, passion & strength of convictions
- Genuine relationships & right cultural fit with partners – generates added value
- Imitation is the best form of flattery!
- Historic England are bringing their Historic Places Panel to Hartlepool for a 3 day visit in the Autumn.

THE TALL SHIPS RACES

6TH - 9TH JULY 2023 HARTLEPOOL



MAXIMO PARK

THE WAILERS

ROB HERON
& THE TEA PAD
ORCHESTRA

ONE
DREW
THE
GUN

HOLY MOLY
& THE
CRACKERS

THE
YOUNG
'UNS

MICHAEL GALLAGHER

MORE ACTS TO BE ANNOUNCED

LIVE MUSIC

FOOD & DRINK

FREE ENTRY



**HARTLEPOOL
BOROUGH COUNCIL**



Thank you



Bev Bearne

Beverley.Bearne@Hartlepool.gov.uk





Department for Levelling Up,
Housing & Communities

Sandwell Metropolitan Borough Council

Rina Rahim



Sandwell Metropolitan Borough Council

Regenerating Sandwell

Rina Rahim – Towns Fund Programme Manager

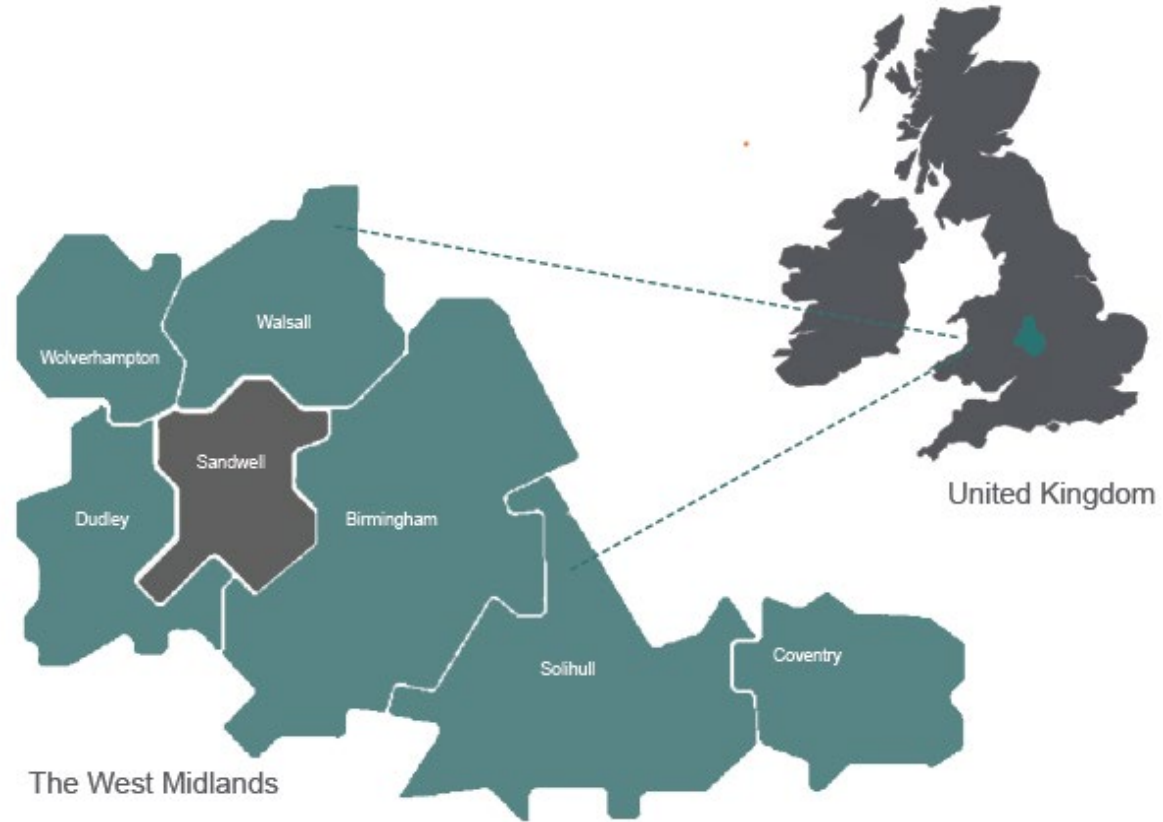




REGENERATION

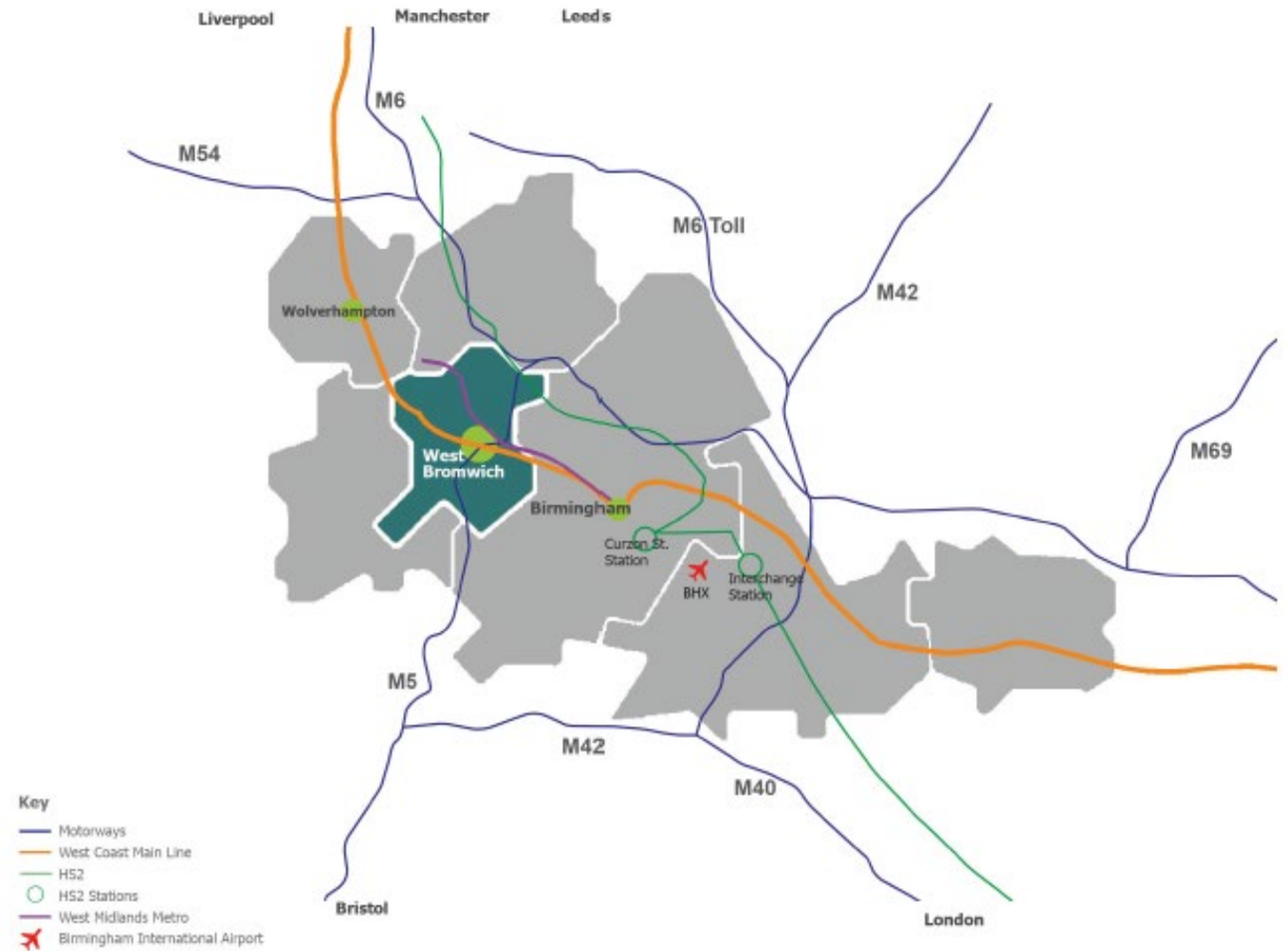
Pipeline Projects 2023 - 2027

The West Midlands and the UK



REGENERATION

Pipeline Projects 2023 - 2027



REGENERATION

Pipeline Projects 2023 - 2027

£6.6b Economy



Population of 340,000



Fast Growing

Young Population



Connectivity



Limited green space

Lack of jobs

Low skills

Inefficient public transport

Lack of things to do

Footfall decline

Digital connectivity

Uninviting high street

Vacant shops



Challenges:

- 12th most deprived Local Authority area,
- Low skills levels with only 27% of Sandwell 16-64's qualified to NVQ 4 and above.
- Cost inflation/supply chain disruption
- Contractor availability/deliverability
- Changing/conflicting priorities
- Land Values vs Land aspirations
- High land remediation costs



Regenerating Sandwell



1 GOAL
to improve the borough

2.8
BILLION

pounds total investment



67
PROJECTS

Planned



15
THOUSAND +

jobs supported



4

THOUSAND +

new homes

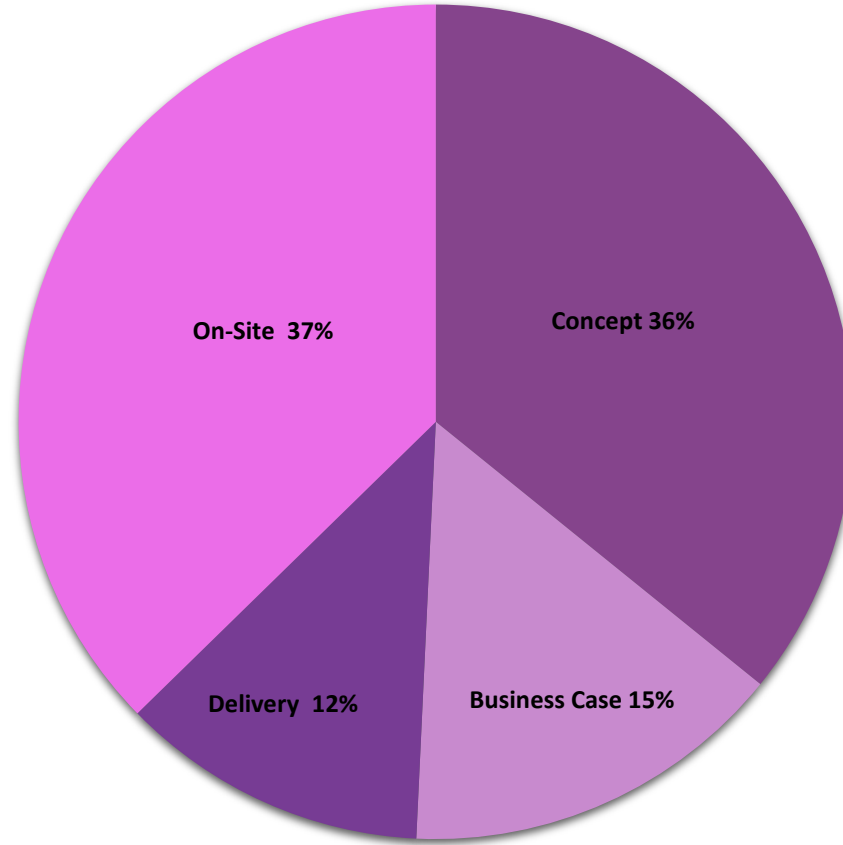
3

PROJECTS

Completed



Pipeline Performance

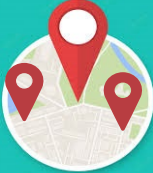


■ Concept ■ Business Case ■ Delivery ■ On-Site



PROUD TO BE PART OF SANDWELL'S TOWN FUND PARTNERSHIP

£67.5
pounds
investment



3
towns

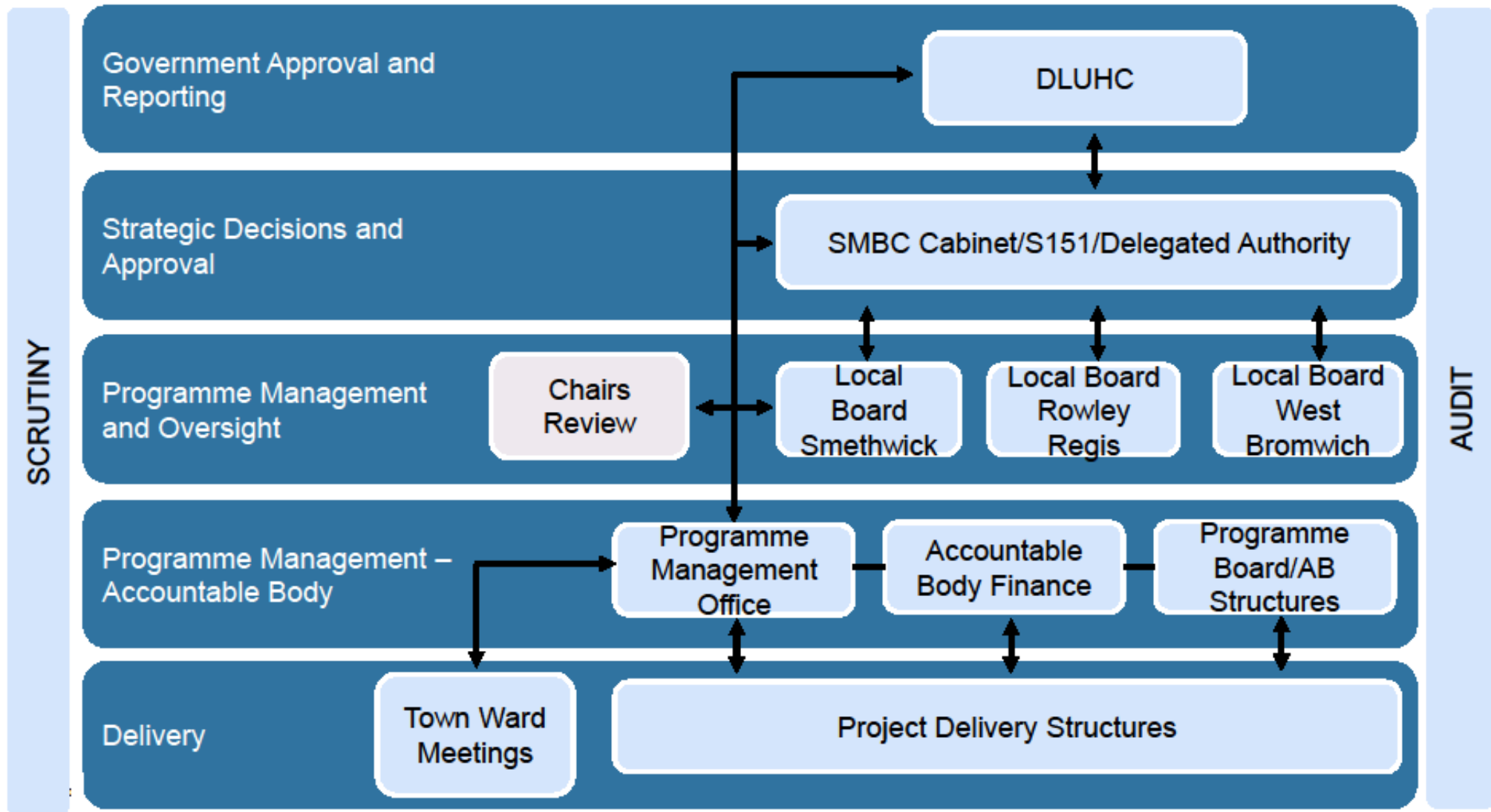
16
PROJECTS
Planned





West Bromwich	Digital Den
	Sandwell Civil and Mechanical Engineering Centre
	Urban Greening
	Retail Diversification Programme
	Town Hall Quarter
	West Bromwich Connected – (Walking and Cycling Scheme)
Smethwick	Midland Met Learning Campus
	Grove Lane Regeneration
	Rolfe Street Canalside Regeneration
	Ron Davis Centre Expansion
	Smethwick Connected – (Walking and Cycling Scheme)
Rowley Regis	Rowley Regis Satellite Education Hub
	Canal Network Connectivity
	Britannia Park Community Hub and Greenspace Improvements
	Blackheath Bus Interchange and Public Realm
	Rowley Regis Connected (Walking and Cycling Scheme)







REGENERATION

Pipeline Projects 2023 - 2027



**CONTACT DETAILS
AND ADDITIONAL
INFORMATION**

Jenna Langford – Regeneration Manager – Jenna_Langford@Sandwell.gov.uk

Rina Rahim – Towns Fund Programme Manager – Rina_Rahim@Sandwell.gov.uk

Regenerating Sandwell – Regenerating@Sandwell.gov.uk

Regeneration Pipeline

There is a dedicated website that holds the details of projects on the Regeneration Pipeline: www.regeneratingsandwell.co.uk

If you have any questions about an individual project that is not covered by the information on the Regenerating Sandwell website, please use the 'contact us' button at www.regeneratingsandwell.co.uk.

There are also progress updates to Cabinet on the Regeneration Pipeline every 6 months. These are published in the public domain and are available to view via sandwell.moderngov.co.uk

Sandwell: A Great Place to do Business

There is a dedicated website that sets out the way in which the council supports current and new businesses.

www.thinksandwell.com

www.regeneratingsandwell.co.uk





Department for Levelling Up,
Housing & Communities

Swindon Borough Council

Lynsey Turner and Craig Walker



Fleming Way Improvement Scheme, Swindon



SWINDON
BOROUGH COUNCIL

Fleming Way – Delivering strategic regeneration



Fleming Way – Improvement scheme



Fleming Way – Artist impressions



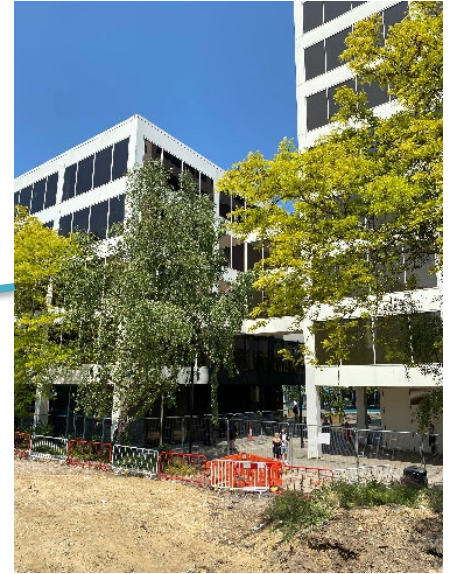
Fleming Way – Artist impressions



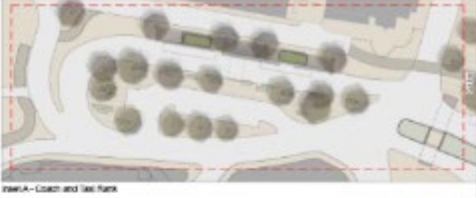
Fleming Way – Artist impressions



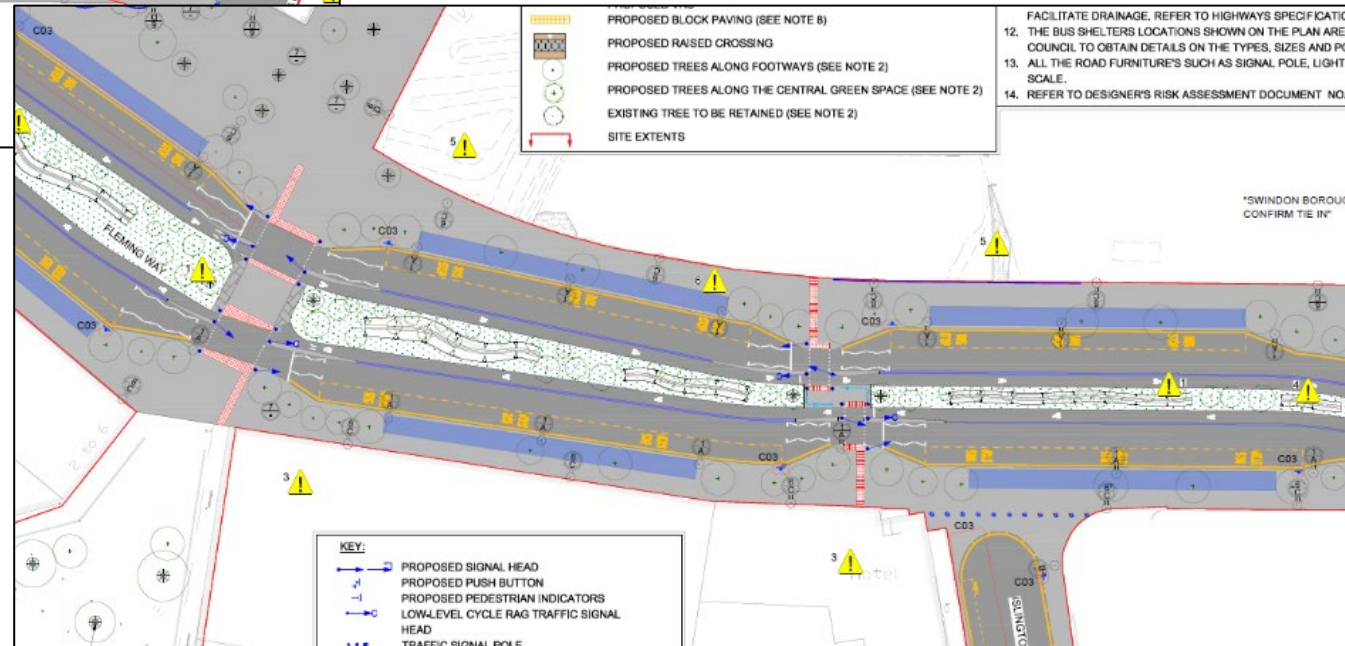
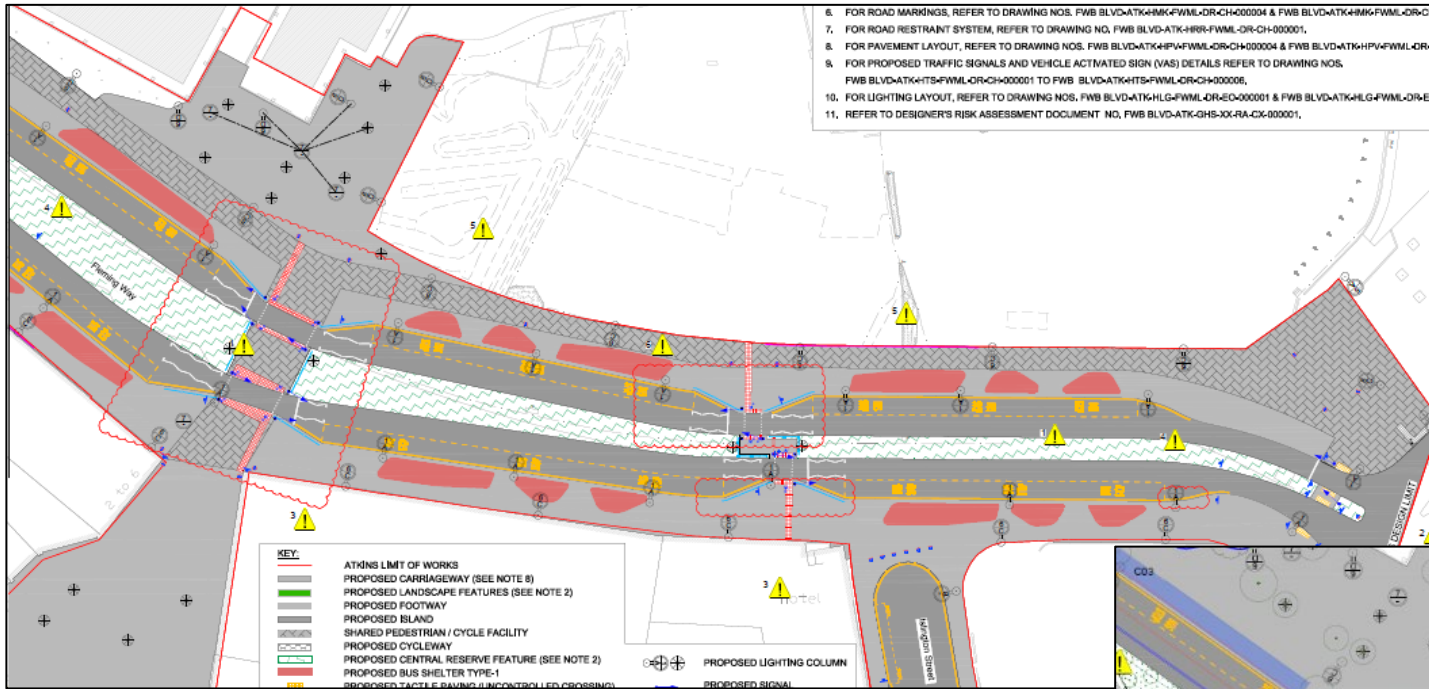
Fleming Way – Enabling town centre regeneration



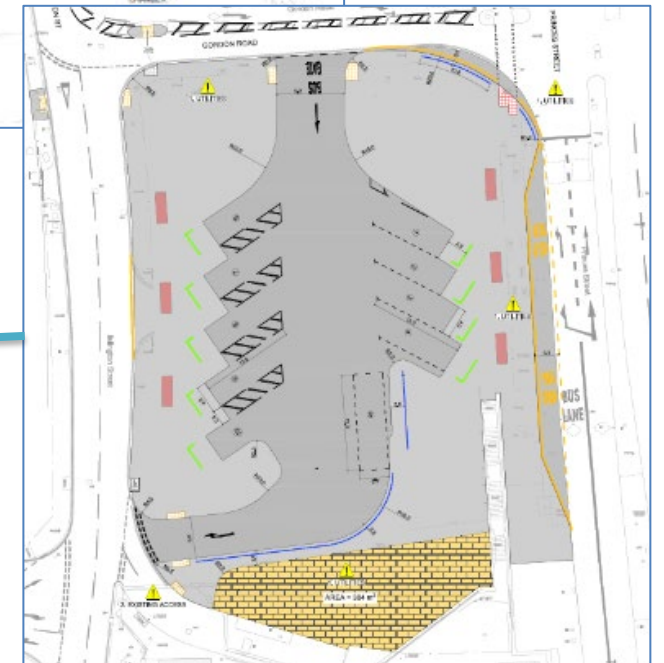
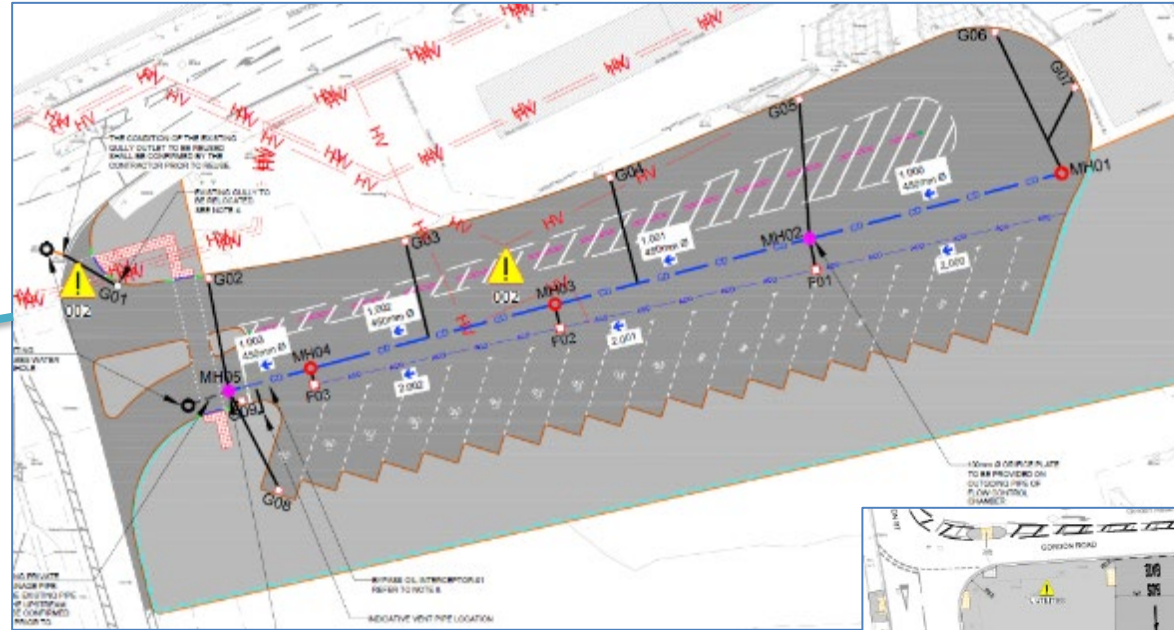
Adapting the project – Landscape design



Adapting the project – UK standards change LTN 1/20



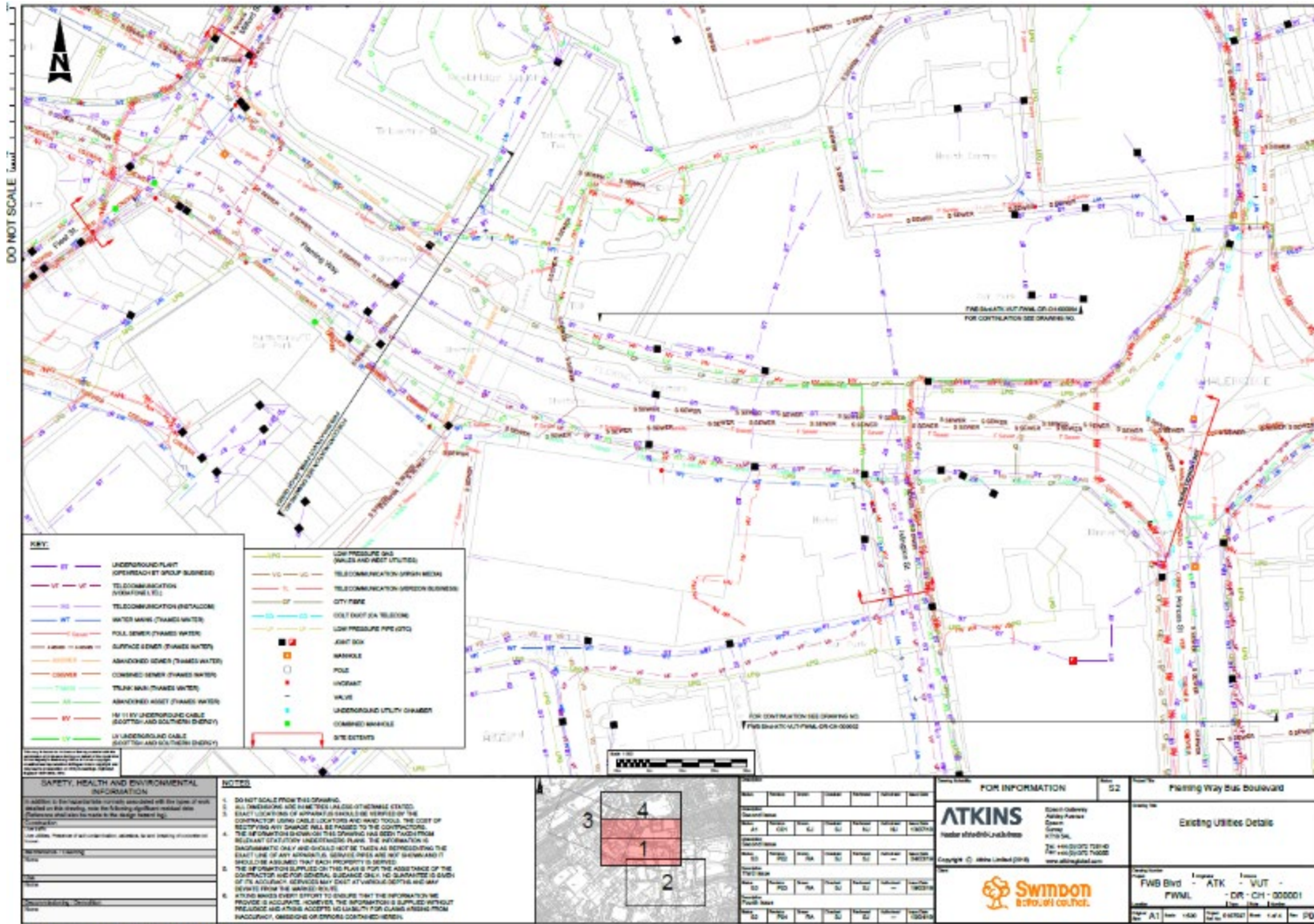
Adapting the project – Temporary bus stations



Adapting the project – Temporary bus facilities



Adapting the project – Utilities



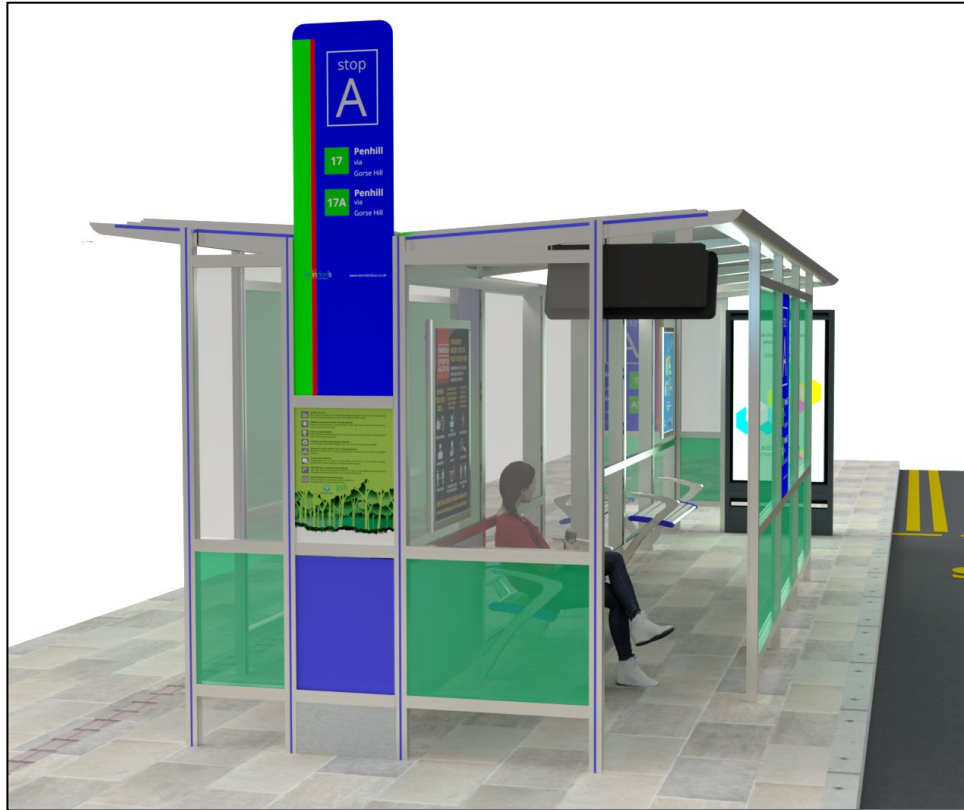
Adapting the project – The canal



Adapting the project – The canal



Adapting the project – Bus shelter procurement



Adapting the project – Bus shelter procurement



Adapting the project – Bus shelter procurement





Local Leadership and Lessons from Town Deal Boards

Chair: Kate Willard OBE

1. Glastonbury (Dr Lynne Sedgmore CBE and Julie Reader-Sullivan)
2. Morley (Gerald Jennings)

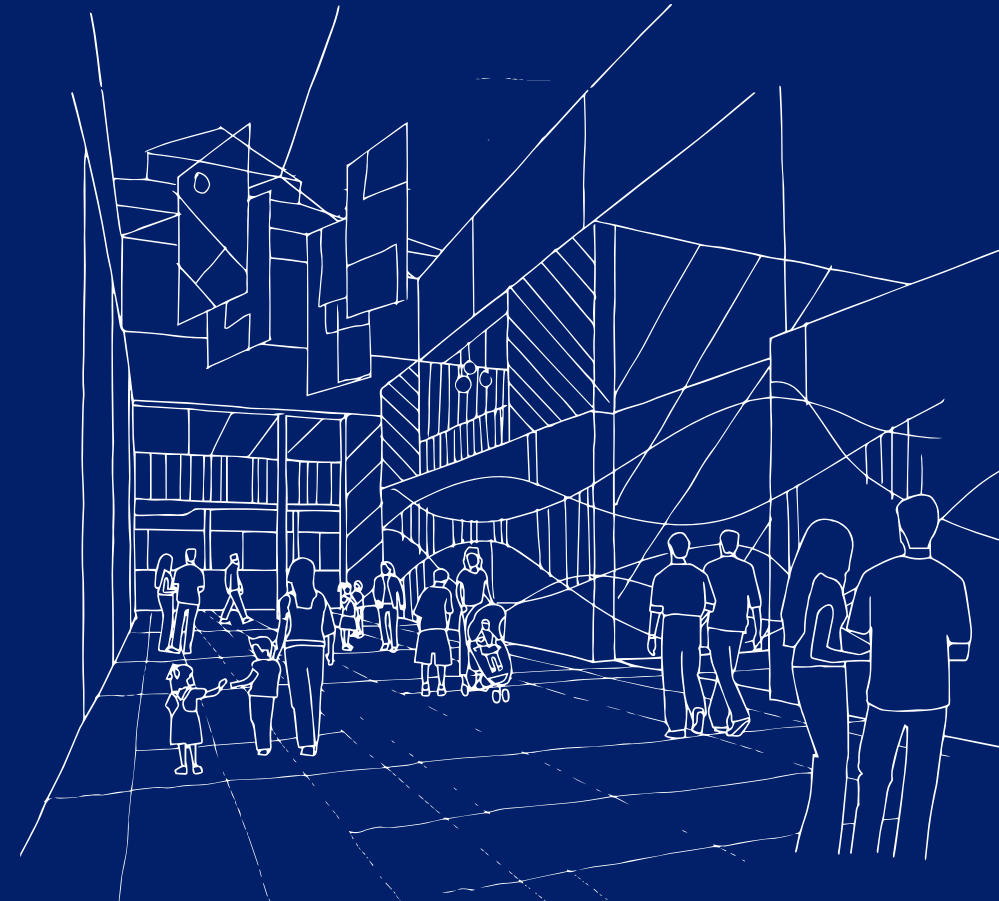




Department for Levelling Up,
Housing & Communities

Kate Willard OBE

Senior Advisor to
Towns Fund Delivery Partner





Department for Levelling Up,
Housing & Communities

Glastonbury

Dr Lynne Sedgmore CBE and
Julie Reader-Sullivan





A View from
the High Street

Glastonbury Town Deal

Towns Deals Conference 20 June 2023



Delivery

- Delivery components for 11 Projects in place and working well.
- Monitoring, community engagement, strong executive, project and board leadership.

Perspective

- An eco system and climate emergency perspective.
- Commitment to leaving a legacy beyond 2026.
- Grass roots generated and led projects from community wide consultation process

Themes

- Strategic cross cutting themes of sustainability, skills and education, procurement and VFM.
- Every person in Glastonbury positively affected by one or more project outcomes.

STRICTLY PRIVATE AND CONFIDENTIAL

R O U N D
G O V E R N A N C E

GLASTONBURY TOWN DEAL (“GTD”)

GLASTONBURY TOWN DEAL BOARD (“GTD BOARD”)

Board Effectiveness Review: Observations and recommendations

MAY 2023

External Board Performance Review

- Effective and achieving results
- Board members proud of town/uniqueness
- Diverse range of skills and experience
- Relentless passion and commitment
- Importance of legacy
- Effective communication
- Strong partnership working
- Strong Chair and Officer leadership
- Development Days
- Community Engagement and Open Days



-
- Scope of 11 projects
 - Increasing costs/funding shortfall
 - Advisory nature of Board
 - Partnership working
 - Small officer team
 - Conflict of Interests
 - Working through COVID
 - Wide range of stakeholders

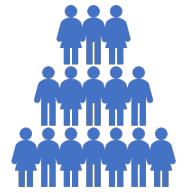
Moving Into
the Delivery
Phase -
Collaboration
Communication
and
Courage –
And.....



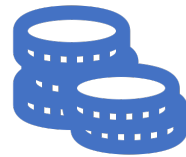
Legacy also about
upskilling Partner
organisations



Support team flexible to
innovate/change/adapt
to rising costs rise and
complexity



Support Team, Chair and
Board relationship
honest and open



Use of Doughnut
Economic Model to
frame the Glastonbury
Town Deal

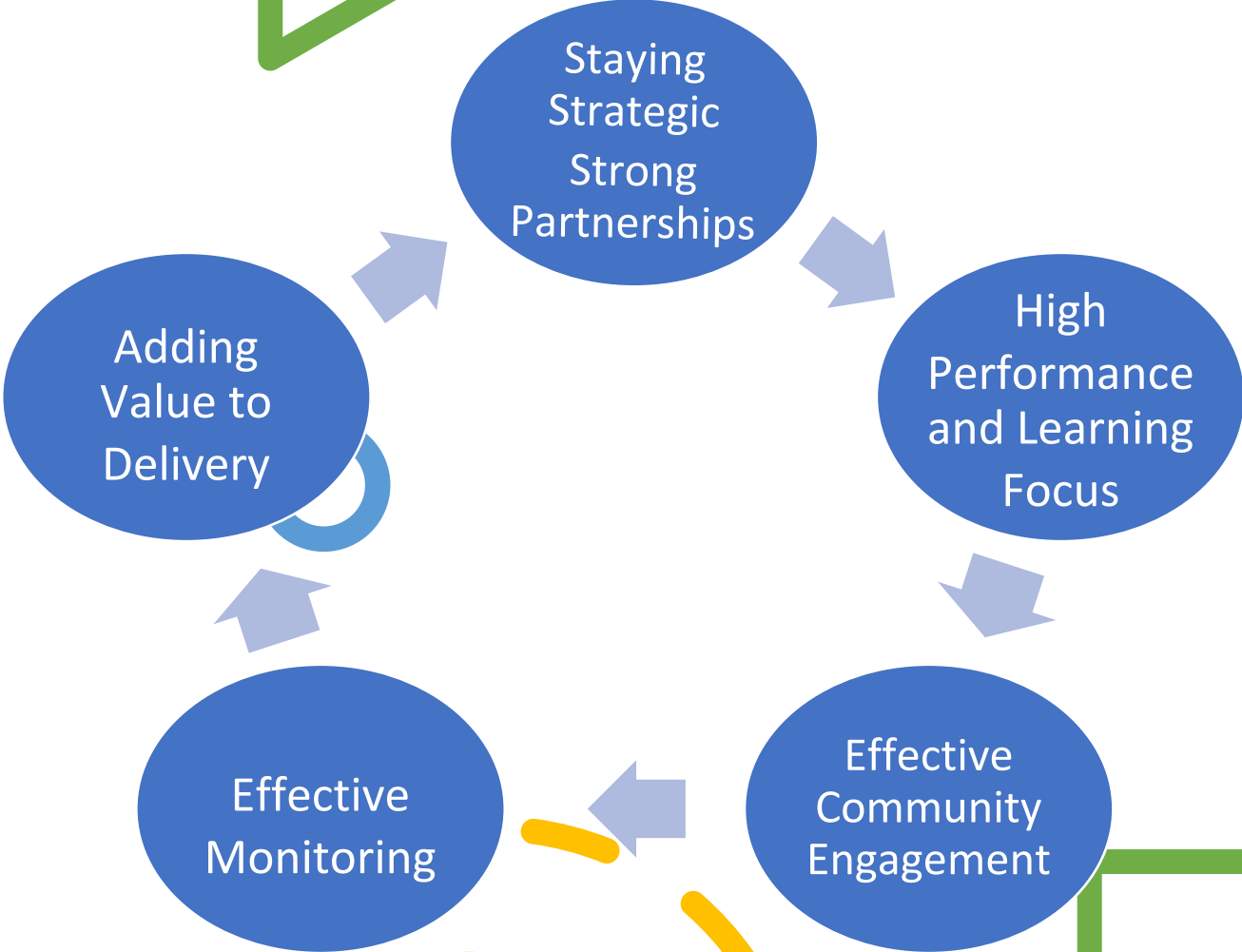


Scope, Schedule and
Budget



Pride in all we do
Providing opportunities
for All to Be the Best
they can be

Why we are effective





Department for Levelling Up,
Housing & Communities

Morley

Gerald Jennings



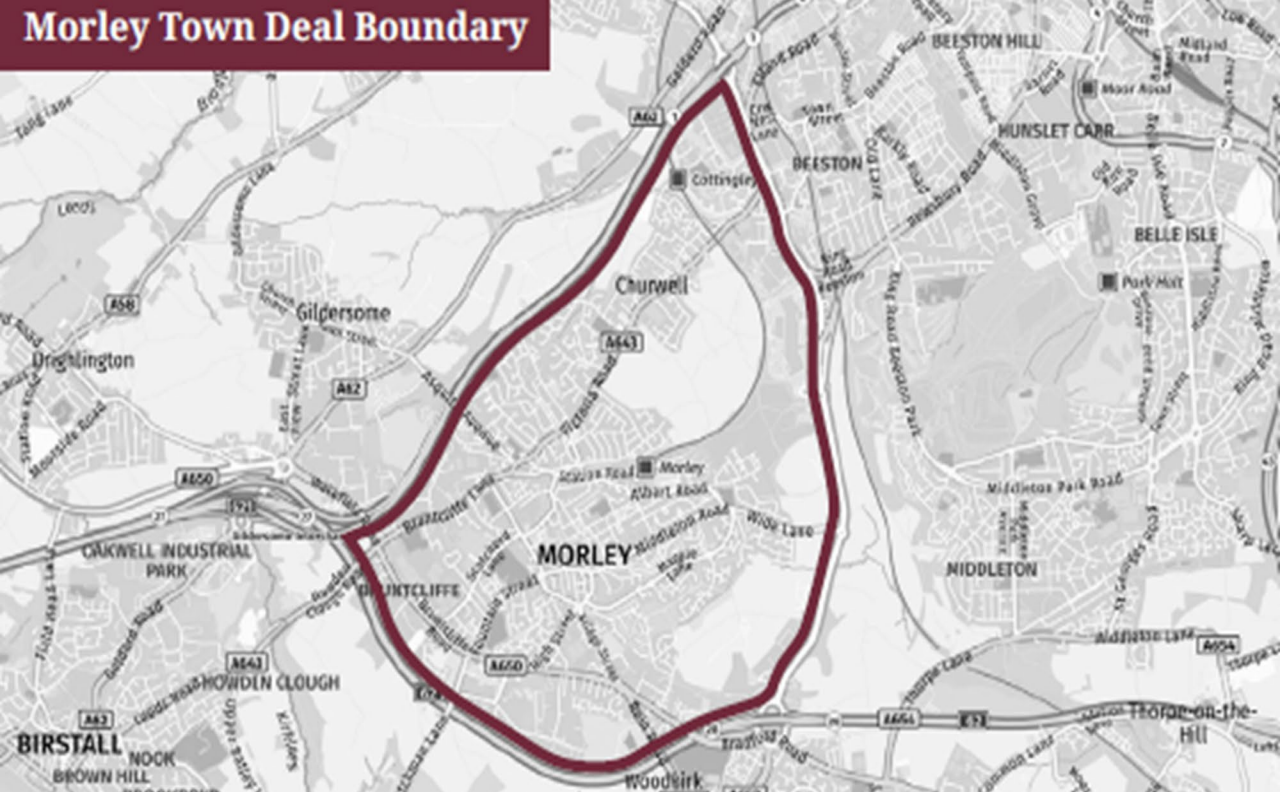
Morley Town Deal

Gerald Jennings

Chair of Morley Town Deal Board



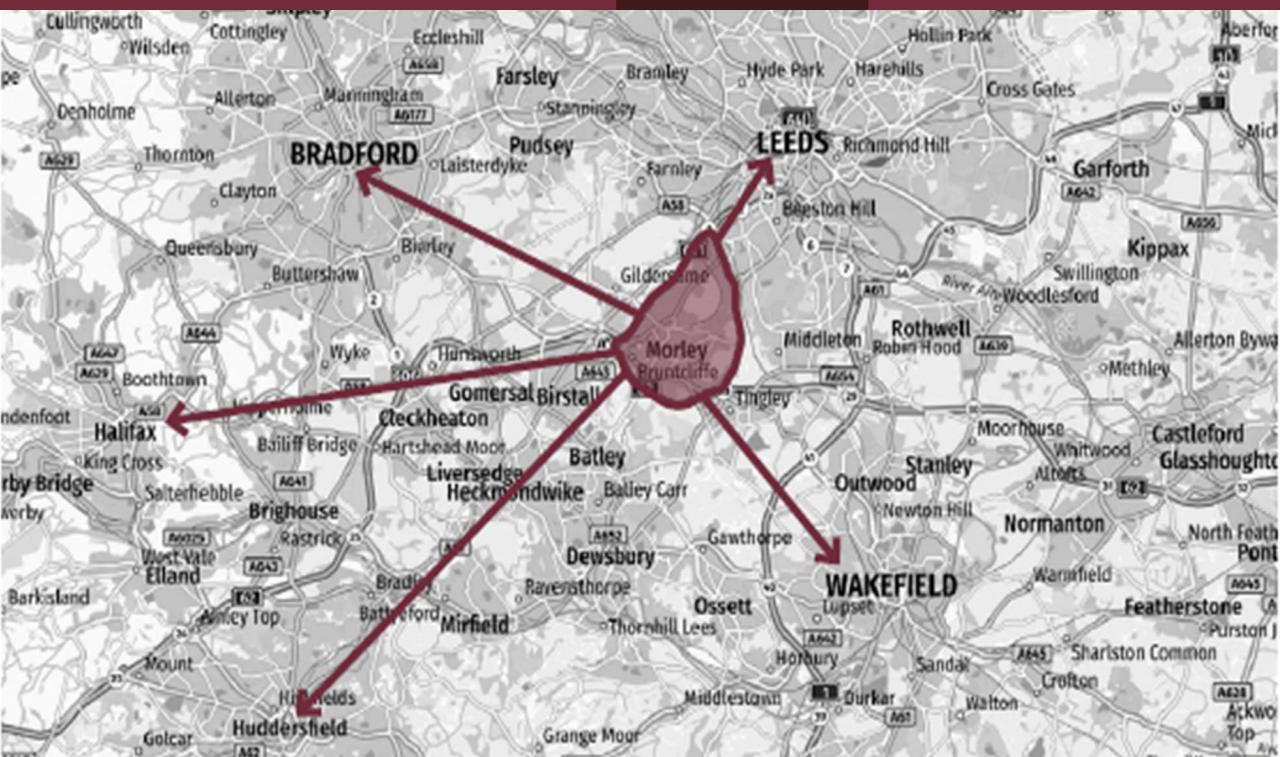
Morley Town Deal Boundary



Original boundary extended

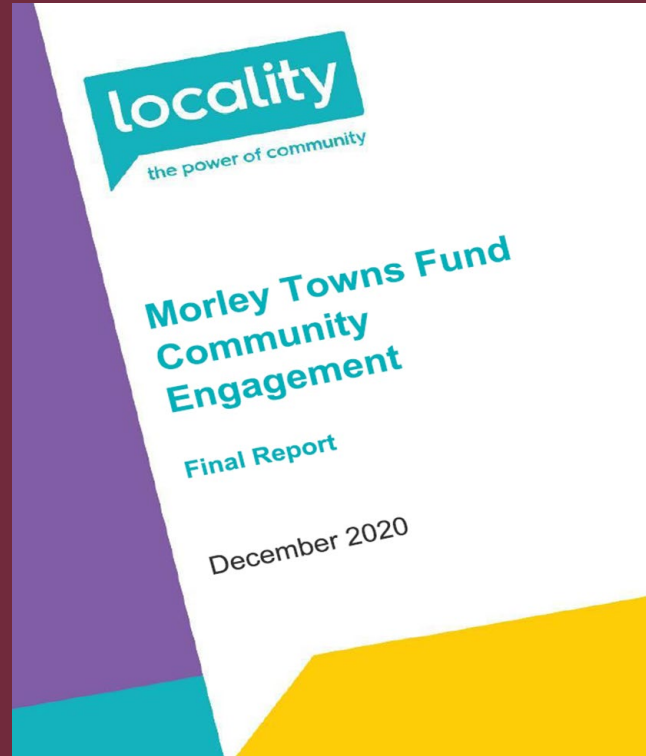
Morley has a strong local identity

Fiercely independent (from Leeds!)



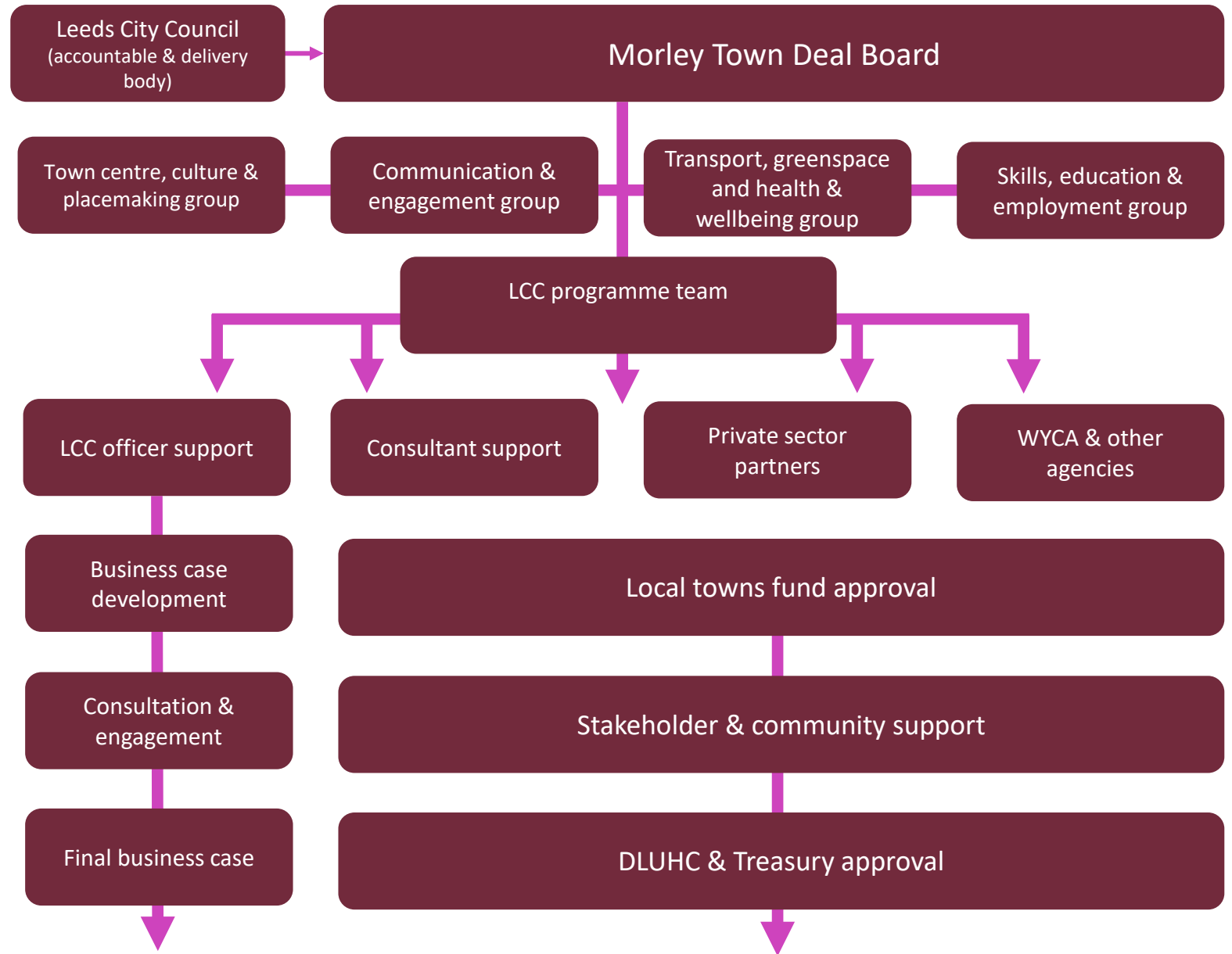
An Evidence-led Case

- Underlying threats
- Local Challenges
- Local Strengths
- Digital led
- Stakeholder interviews
- Community engagement



The Town Deal Board

Wide ranging representation with a Chair from the private sector



Town Investment Plan 2021



Project	Grant monies	Leveraged	Match funding
Greener and Connected	£9.9m	£1.27m £30,000	Leeds City Council Morley Town Council
Morley Town Hall	£3.9m	£457,000	Leeds City Council
Morley Station Gateway	£2.4m	£270,000 £45,000 £71,000	Network Rail Morley Town Council Shared Prosperity Fund
Morley Skills College	£4.5m	£700,000	Luminate Education Group
White Rose Innovation Hub	£1.9m	£3,071,166	Munroe K
Heritage Investment Programme	£1.7m	£68,750 £218,750	Leeds City Council Shop Owners
Sub-totals	£24.3m	£6,201.666	
		£30,501,666	



Lessons learned

Barriers

- Timescale and detail involved
- Constraints imposed by Covid
- No lead-in or initial bid – a ‘cold start’

Challenges

- P/politics
- Board representation and skills
- Community buy-in

Risks

- Cost inflation
- Delivery and under achievement
- Inertia and apathy

Opportunities

- Private sector leverage
- Catalyst for investment
- Behavioural and cultural change



- Open
- Transparent
- Connected
- Committed

MORLEY more than a place | HM Government | Leeds CITY COUNCIL

Transforming our town

With a £24.3m investment plan

For better greenspaces, jobs, adult education and skills, a better connected train station, an improved Morley Town Hall, and better cycling and walking routes.

bit.ly/morleytowndeal

GO Wild
Let the Kids & have your say on the future of Morley's parks
Scatcherd Park
Thursday 2nd June, 10am to 2pm

The MORLEY Town Deal

Join in at our next public Morley Town Deal Board meeting on:
Monday 22nd May
2pm – 4pm

Large Banqueting Suite
Morley Town Hall
Queen Street, Morley, LS27 9DY

Want to keep up to date with the Morley Town Deal? Download the latest meeting minutes by scanning the QR code or visiting:
bit.ly/mtd-boardpapers

Have your say...
on the proposals for the Morley Conservation Area

Found out more:
bit.ly/morleyheritage

ART IN THE PARK
THURSDAY 1 JUNE - 11AM-3PM

with

Unleash your inner Picasso and help design a new piece of wall art for Hembrigg Park with the renowned mural artist, The Cortisol Kid, United Art Project and Allied Partnership.

In celebration of the recent work at Hembrigg Park, we are holding a mural workshop and activity day. Come along and learn about street art, mural design, and community pride in Morley. It's free and all materials are supplied.

To find out more about the Morley Town Deal visit:
bit.ly/mtdinfo

Thankyou





Department for Levelling Up,
Housing & Communities

**Towns
Fund**[®]
Delivery Partner

